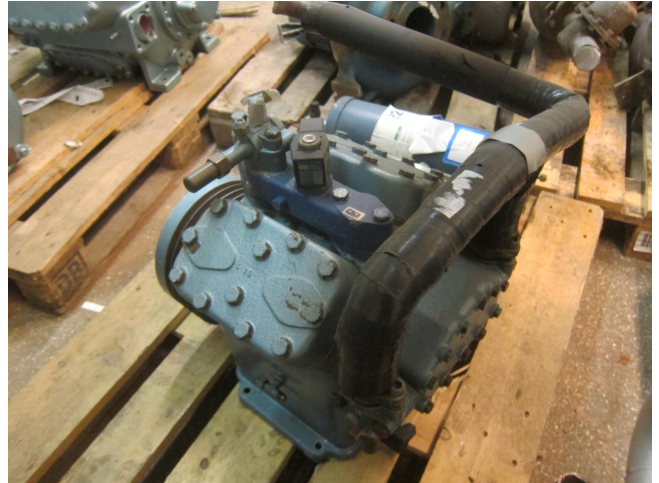


## Bock F5

### Specifications

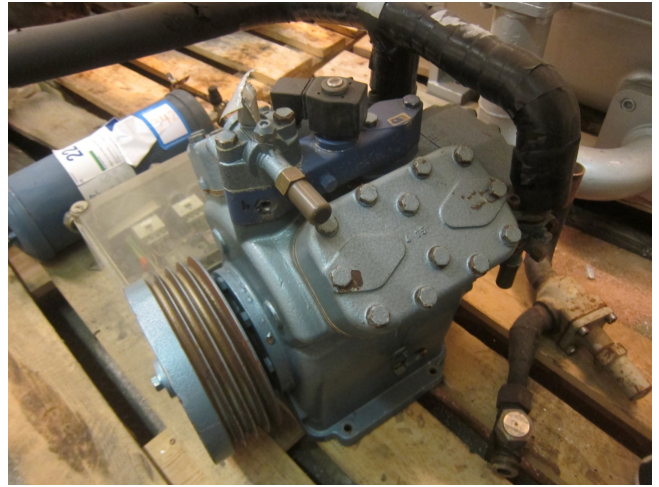
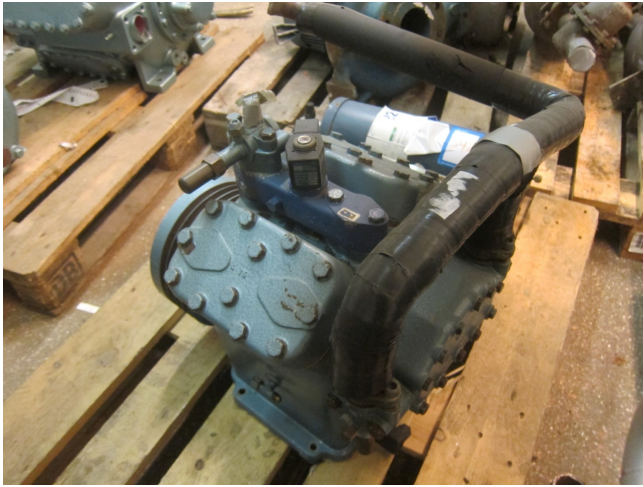
Merk	Bock
Type	F5
Koudemiddel	Freon
kW at +10°C/+40°C	83.33
kW at 0°C/+40°C	59.40
kW at -5°C/+40°C	49.15
kW at -10°C/+40°C	40.01
kW at -20°C/+40°C	24.94
kW at -30°C/+40°C	13.98
kW at -40°C/+40°C	6.89
kW at -45°C/+40°C	4.72
Capaciteits Controle	✓
Opmerkingen	R404a - R22 or other freon types
Afmetingen	500x350x450 mm (LxWxH)
Stock	1



### Description

#### Used Bock F5

Gebruikte open zuiger compressor Bock F5



R404A/R507		Performance data										1.450 rpm			
Type	Cond. temp. °C	Cooling capacity Q <sub>0</sub> [W]										Power P [kW]			
		Evaporating temperature °C													
		10	5	0	-5	-10	-15	-20	-25	-30	-35	-40	-45		
FX2	30	Q 13423	11418	9621	8020	6606	5366	4290	3366	2584	1933	1402	979	P 2.21	2.19
	40	Q 11561	9785	8201	6797	5562	4485	3555	2761	2092	1537	1085	724	P 2.65	2.56
	50	Q 9652	8113	6749	5548	4500	3593	2816	2159	1609	1157	791	P 3.02	2.88	
FX3	30	Q 24402	21165	20377	17011	14041	11442	9187	7531	5958	4231	3096	2175	P 4.97	4.85
	40	Q 20584	17356	14498	11985	9791	7889	6254	4860	3680	2690	1862	P 5.90	5.62	
	50	Q 15309	12836	10585	8517	6833	5402	4208	3208	2411	1759	1272	P 6.34	6.30	
FX4	30	Q 46772	39538	33069	27326	22270	17862	14063	10834	8135	5928	4173	2832	P 10.09	9.75
	40	Q 39157	32814	27179	22214	17880	14127	10946	8268	6064	4295	2922	P 11.44	10.83	
	50	Q 30554	24844	20253	15754	12620	9822	7624	5833	4364	3238	2338	P 12.86	12.48	
FX5	30	Q 83330	70764	59401	49154	40014	31955	24949	18962	13981	9965	6890	4728	P 16.87	16.64
	40	Q 70427	59251	49183	40194	32258	25345	19428	14480	10472	7377	5168	P 20.21	19.31	
	50	Q 53165	41264	33081	26908	21918	17000	13000	9208	6503	4647	3257	P 17.86	18.55	
FX14/1166	30	Q 114050	97388	81727	67628	55054	43966	34206	26096	19237	13711	9480	6506	P 27.80	26.56
	40	Q 96896	81521	67668	55301	44382	34871	26730	19922	14408	10190	7110	P 27.80	26.56	
	50	Q 75448	61249	50112	40114	32258	25345	19428	14480	10472	7377	5168	P 20.96	21.77	
FX14/1366	30	Q 134550	114291	95912	79366	64609	51927	40284	30023	22375	16091	11129	7635	P 17.86	18.55
	40	Q 114050	97388	81727	67628	55054	43966	34206	26096	19237	13711	9480	P 20.96	21.77	
	50	Q 83330	70764	59401	49154	40014	31955	24949	18962	13981	9965	6890	P 17.86	18.55	